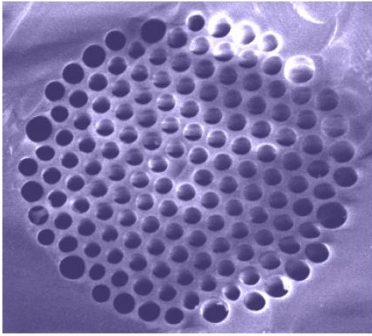
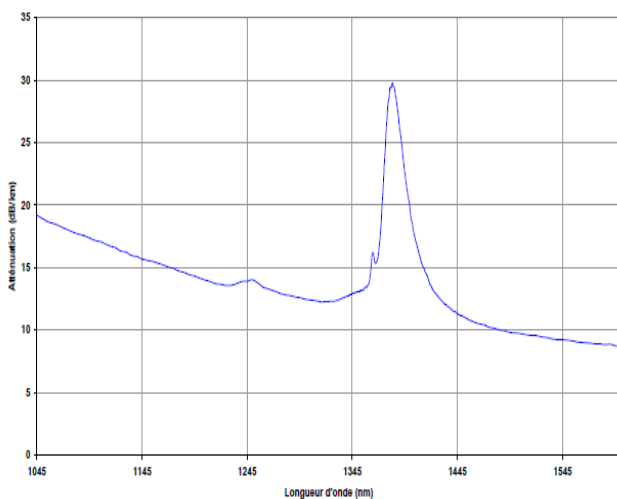


## Nonlinear PCF Fiber



Product reference	NLPCF-XX-YYY
Cladding diameter ( $\mu\text{m}$ )	125 (+/- 5 $\mu\text{m}$ )
Core diameter ( $\mu\text{m}$ )	2 (+/-0.2 $\mu\text{m}$ )
Core material	silica F300
Mode field diameter ( $\mu\text{m}$ )	1.8+/-0.2
Zero dispersion wavelength (nm)	780 & 1515 +/-15
HOM cut-off wavelength	< 700 nm
Coating diameter ( $\mu\text{m}$ )	245 (+/- 15 $\mu\text{m}$ )
Coating material ( $\mu\text{m}$ )	Dual coat acrylate
Background Loss (dB/km) @ 1060 nm	< 20
Background losses (dB/km) @1550 nm	<10
OH @1550 nm (dB)	< 50
<b>Key features</b>	
Small mode field diameter, high non-linear coefficient, low losses	
<b>Applications</b>	
Supercontinuum generation, optical regeneration, frequency conversion.	

*Fiber attenuation*



*Fiber dispersion*

