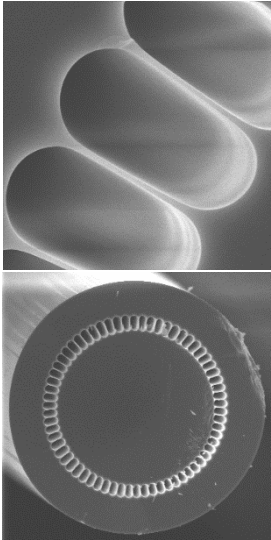


## AIRCLAD PCF FIBER



Product reference	ACPCF-XX-YYY
Cladding diameter ( $\mu\text{m}$ )	80 to 160 (+/- 5 $\mu\text{m}$ )
Core diameter ( $\mu\text{m}$ )	50, 80 and 100 (+/- 3 $\mu\text{m}$ )*
Core material	silica F300
Coating diameter ( $\mu\text{m}$ )	245 (+/- 5 $\mu\text{m}$ )
Coating material ( $\mu\text{m}$ )	Dual coat acrylate
Numerical aperture	> 0.5
Background losses (dB/km) @1310 nm	< 11
Background losses (dB/km) @1550 nm	< 5
Minimal web thickness (nm)	150
<b>Key features</b>	
High numerical aperture, low losses, large core diameter	
<b>Applications</b>	
Power delivery, spectroscopy and instrumentation	

\*Other dimension available on request

### Typical Loss spectrum

